



saspri

Southern African Social Policy Research Institute
Southern African Social Policy Research Insights

Crime:

An additional domain of deprivation?

David McLennan



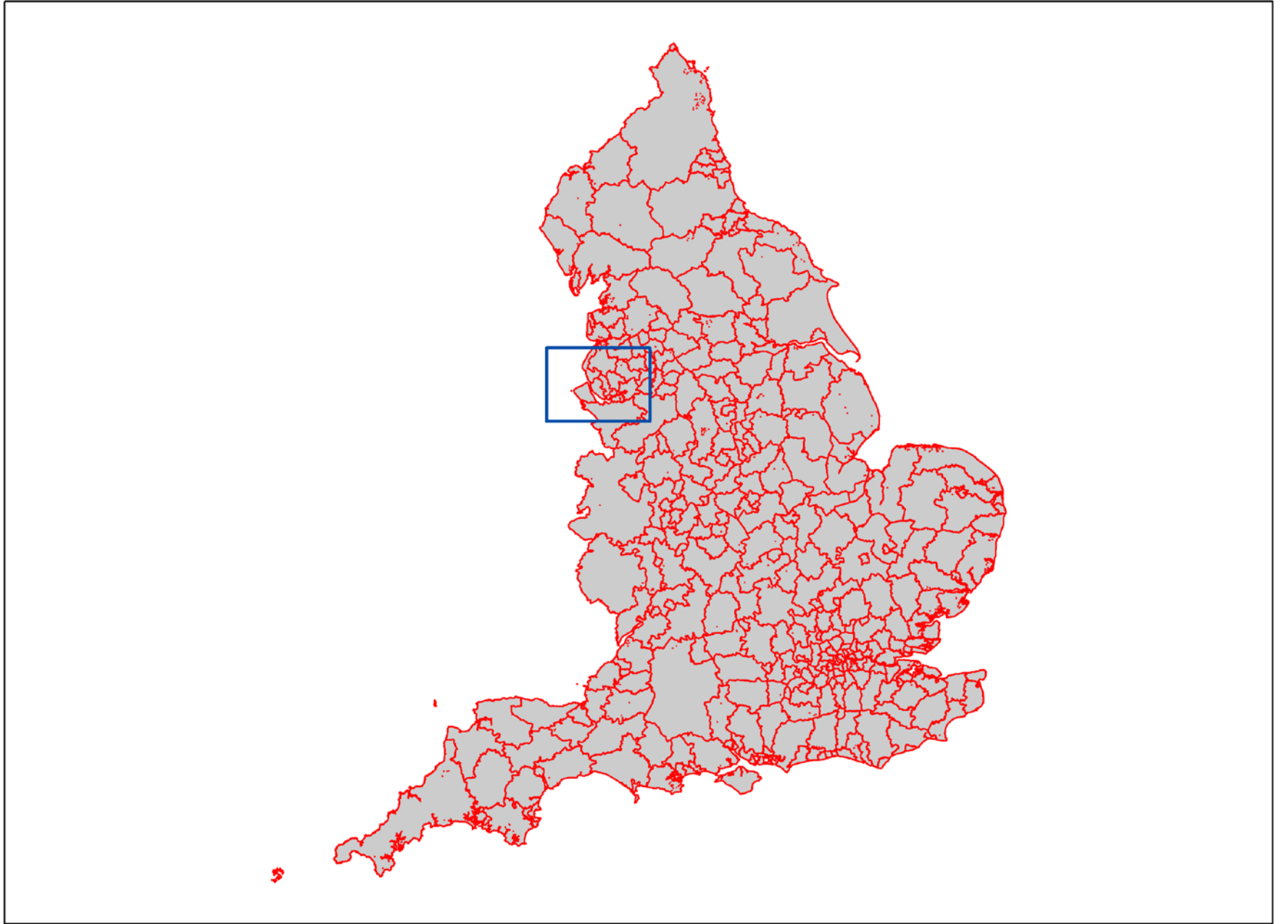
Crime in South Africa

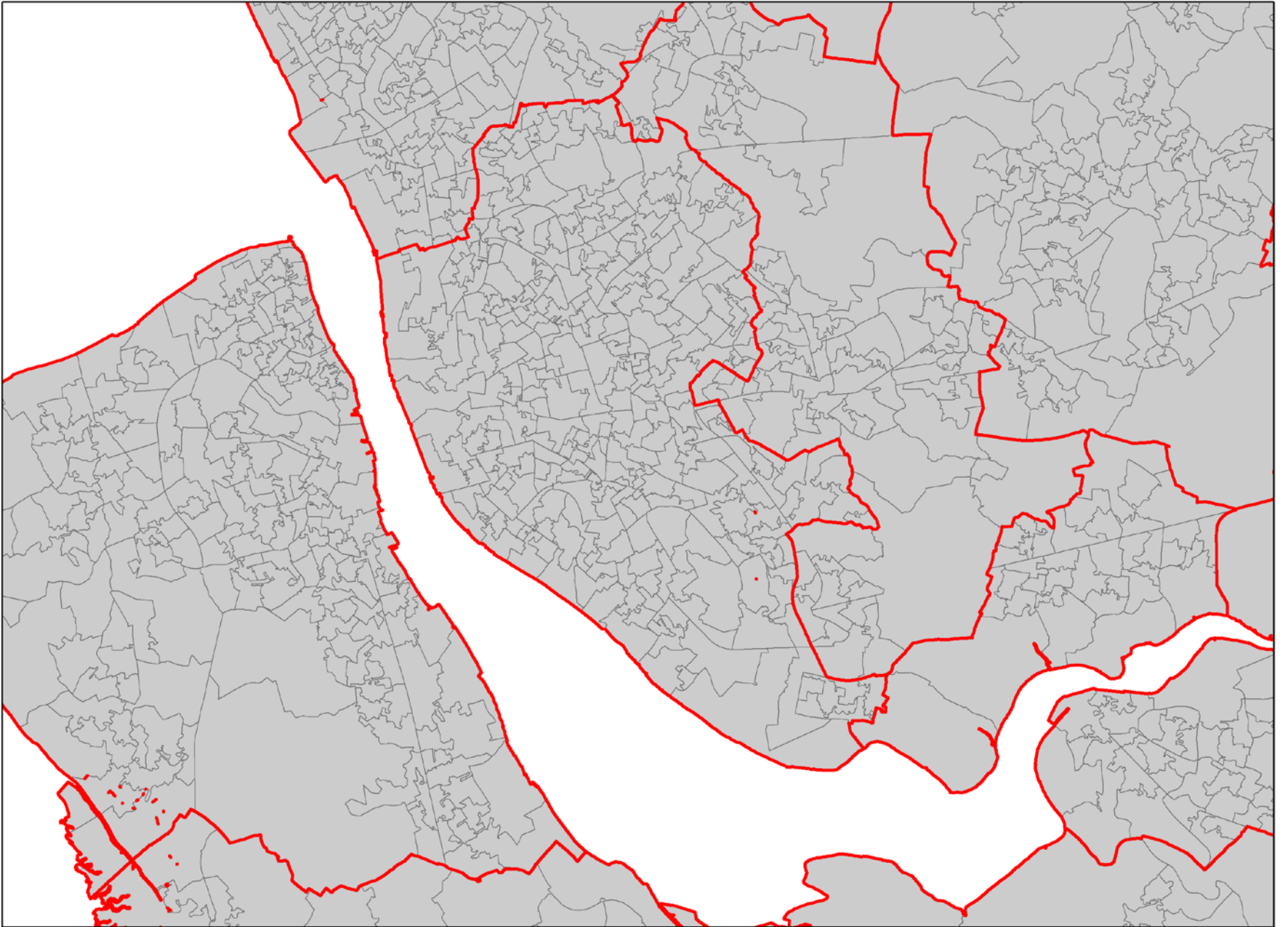
- South Africa has one of the highest violent crime rates in the world (UNODC).
- According to the StatsSA Victims Of Crime Survey 2012:
 - 14% of people feel unsafe walking alone in their neighbourhood during the day.
 - 64% of people feel unsafe walking alone in their neighbourhood at night.
- Crime has economic, physical and psychological consequences, for victims and wider community.

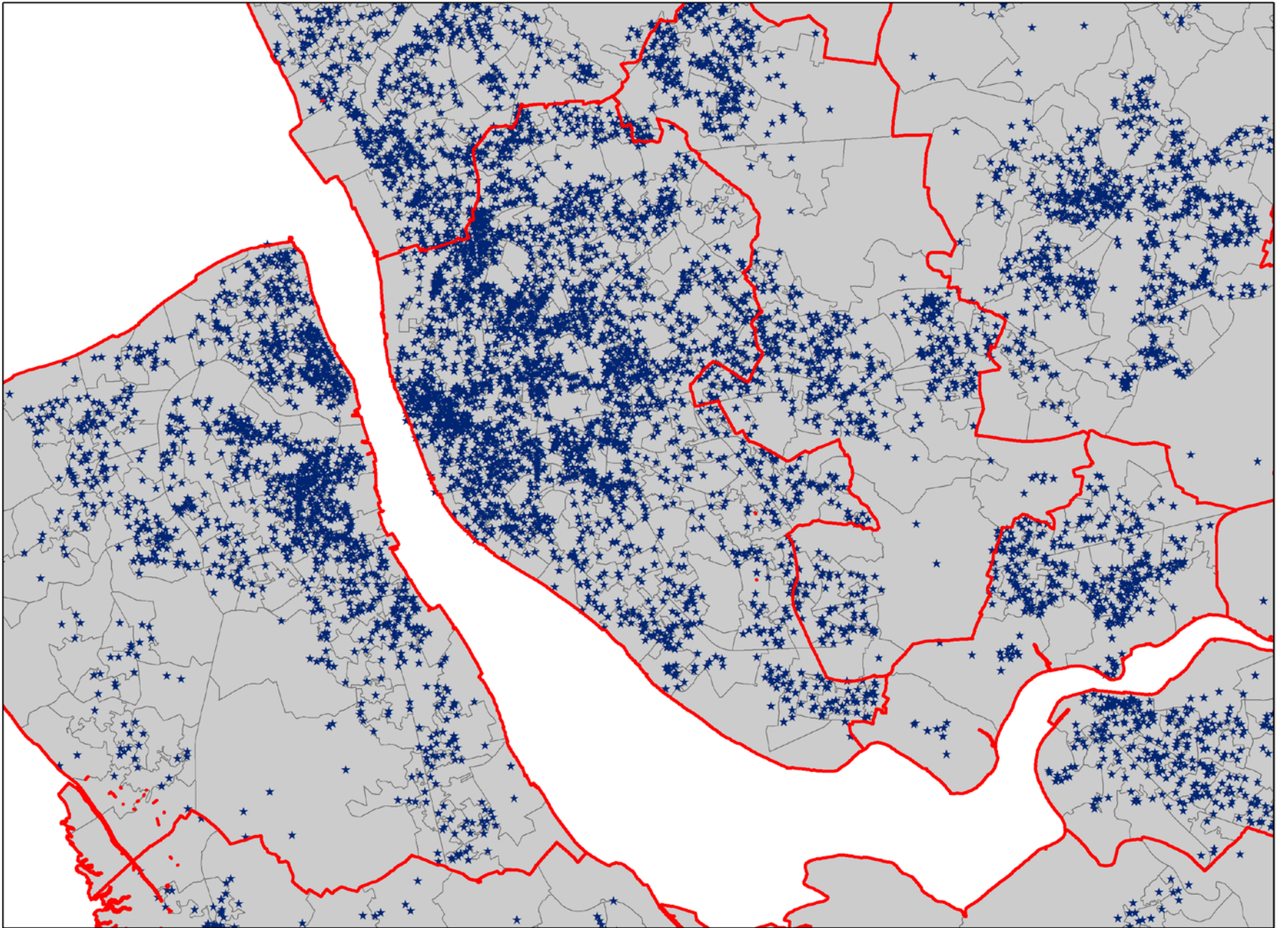


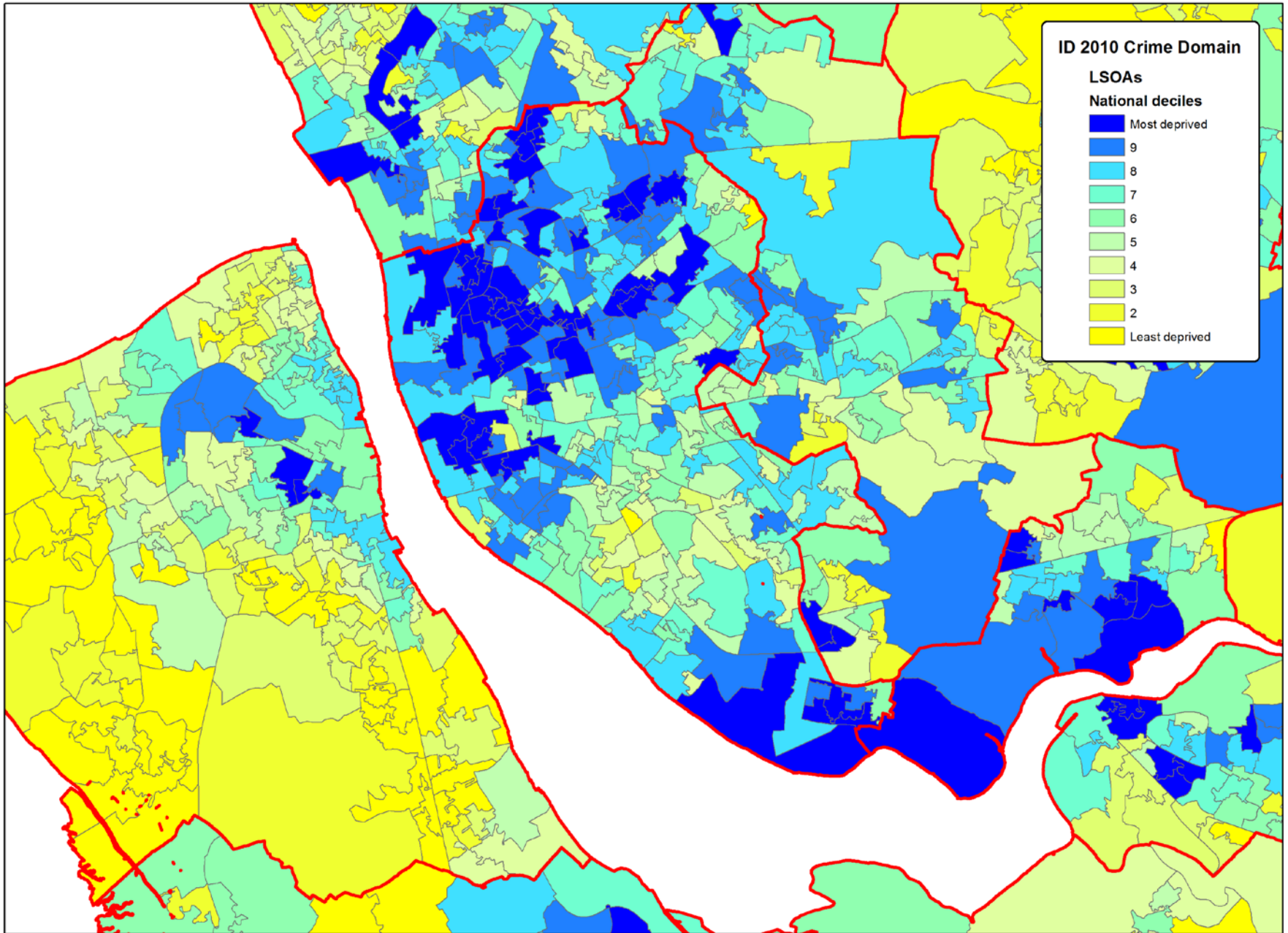
Experience in the UK

- Crime Domain initially introduced in English Indices of Deprivation 2004 (then 2007, 2010 & 2015).
- Data exists on every crime recorded by the police, including the detailed grid reference of location – but highly sensitive.
- Data sharing agreements with police forces.
- Crimes mapped and assigned to neighbourhood of occurrence.







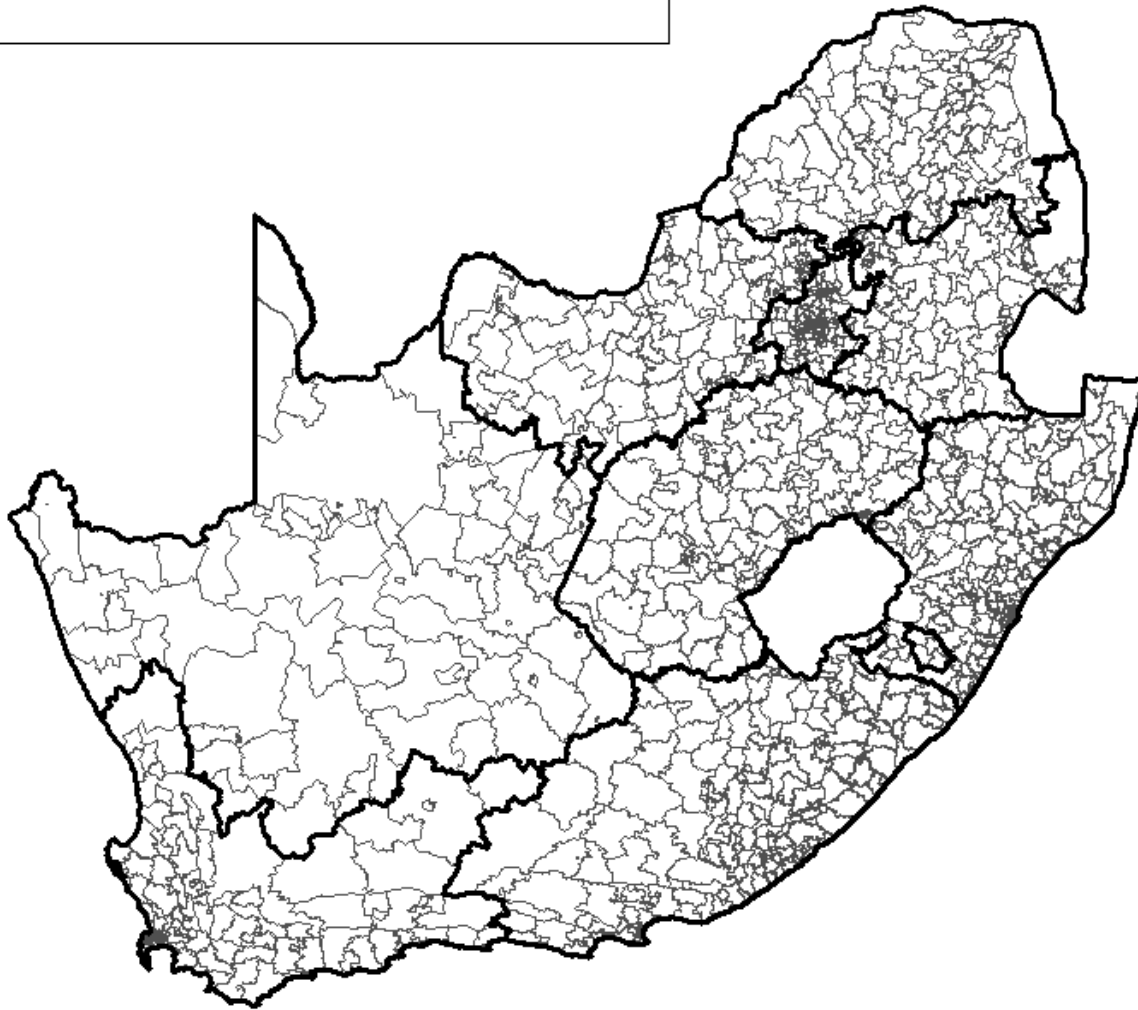




Crime data in SA

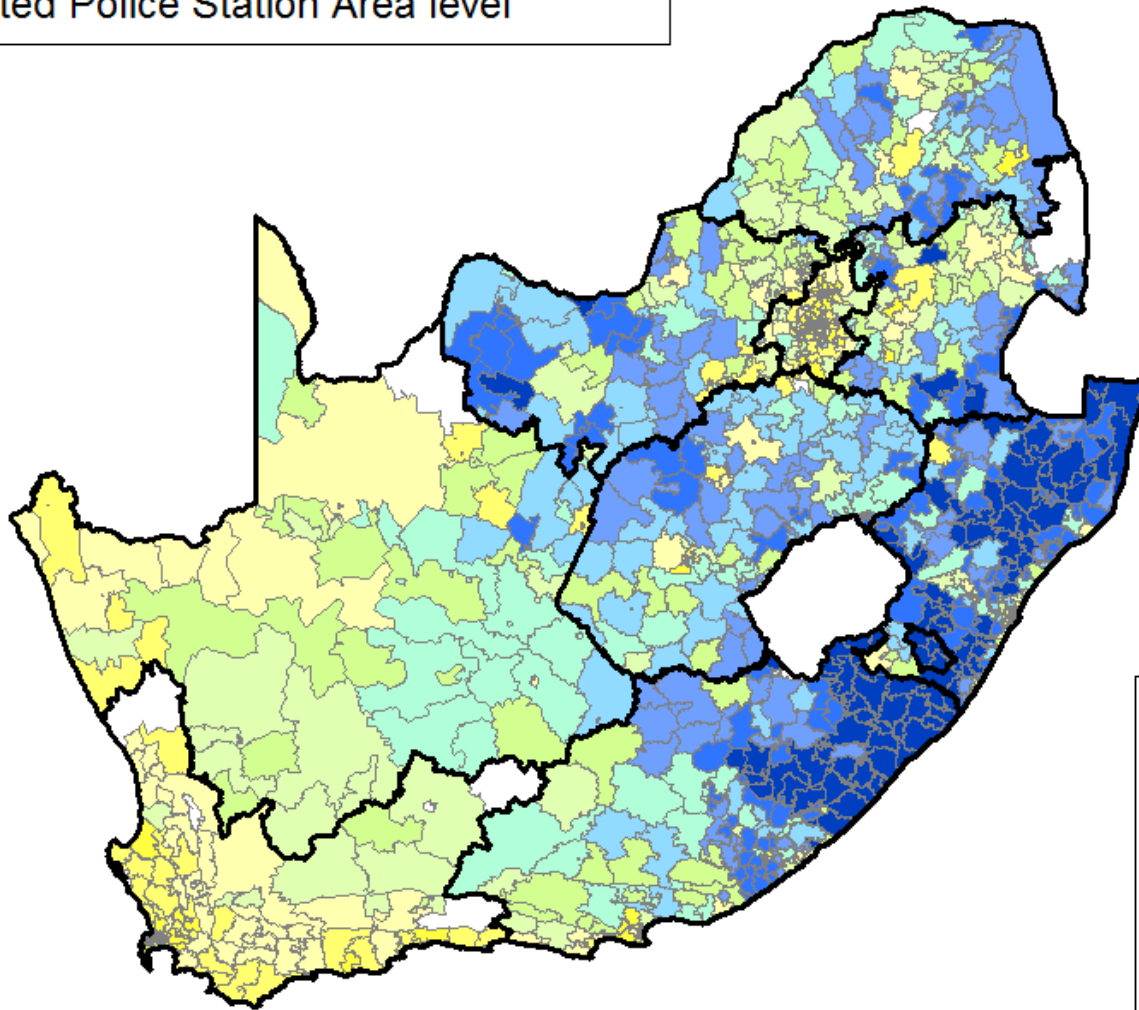
- Recorded crime data collated by SAPS.
- Currently available for research purposes aggregated to Police Station/Precinct level.
- Underlying 'docket'-level data should contain detailed locational data, such as grid references, but...
 - Currently not possible to obtain from SAPS.
 - Unclear what proportion of crimes are missing detailed locational data.

Approximated Police Station Areas

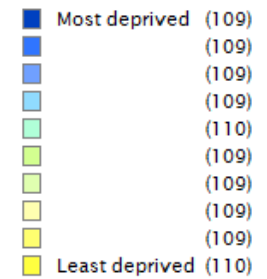


SAIMD 2001

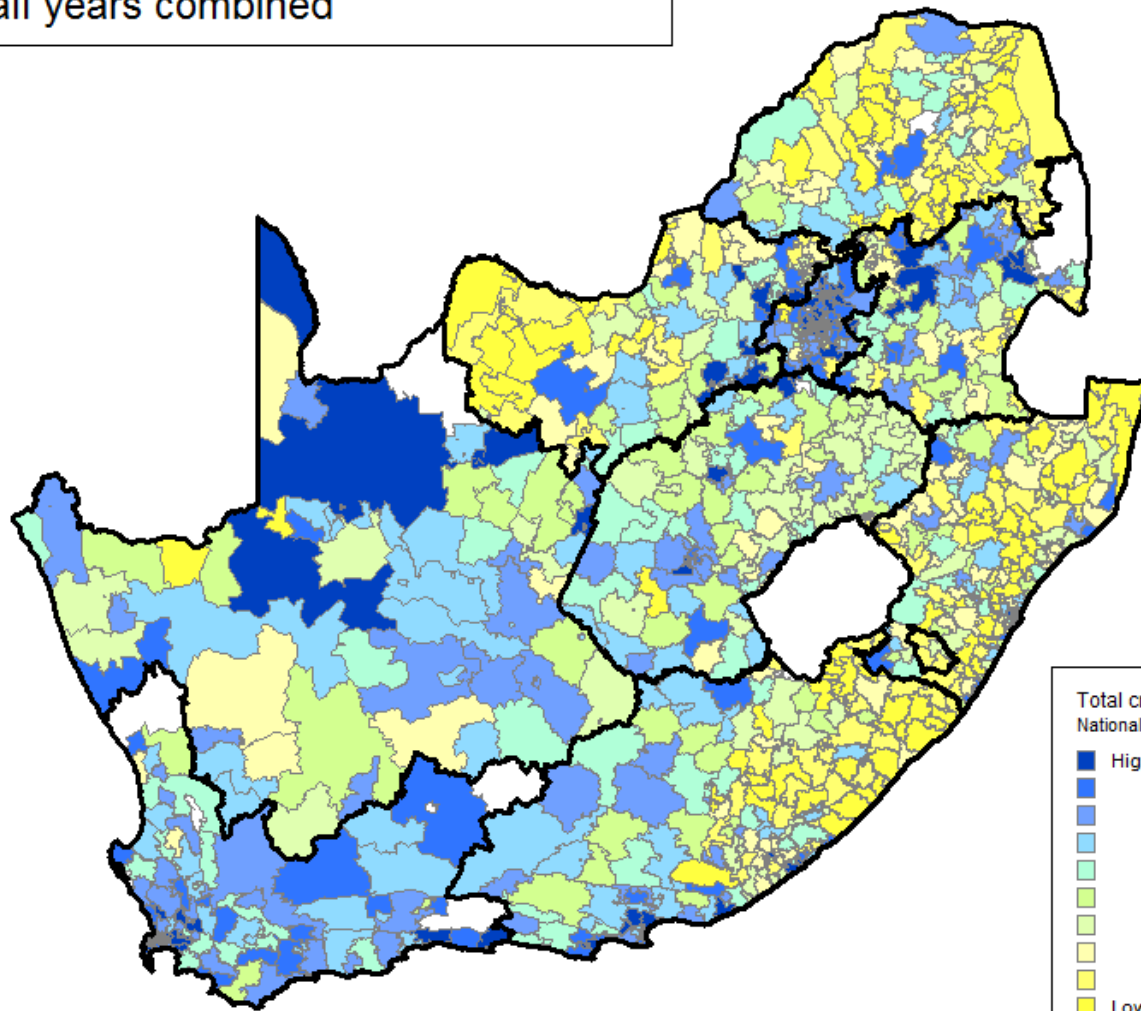
Approximated Police Station Area level



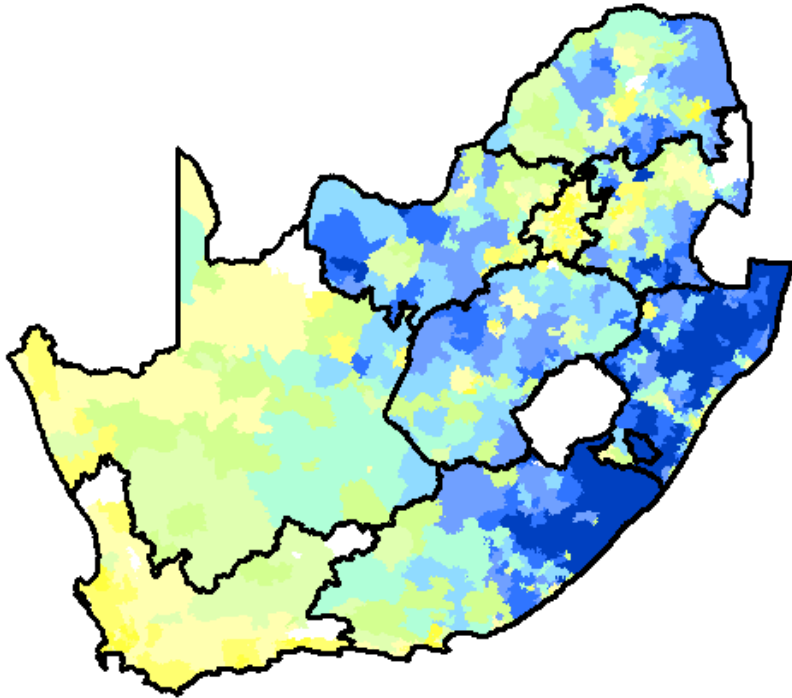
SAIMD 2001
National deciles



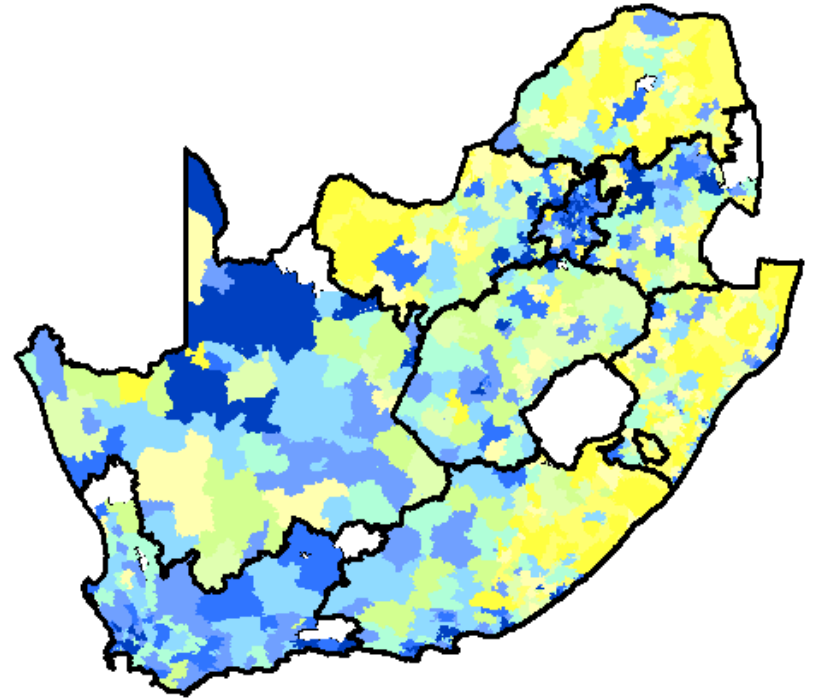
Total Crime Rate:
All crime, all years combined



SAIMD 2001

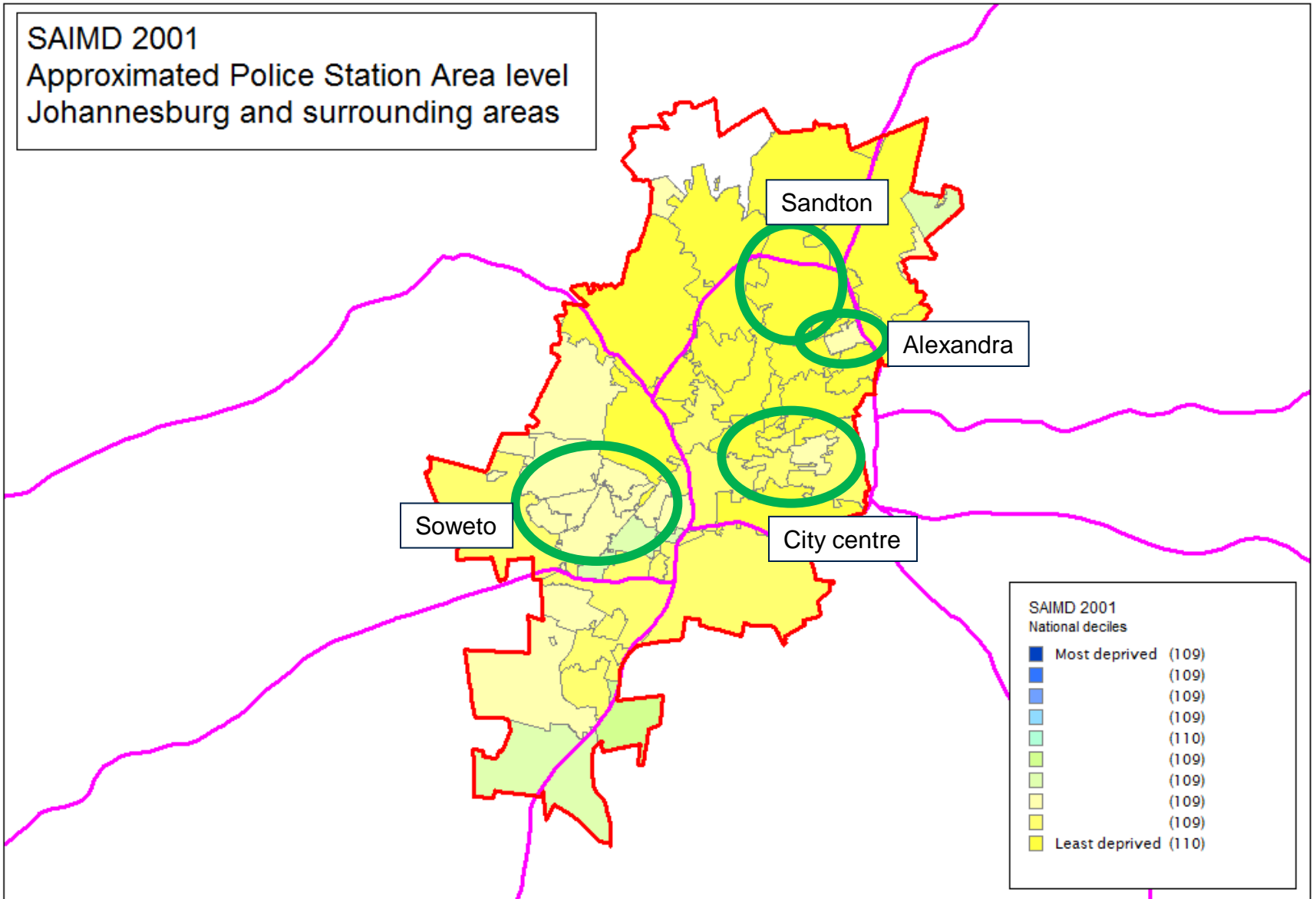


Total Crime Rate:
All crime, all years combined

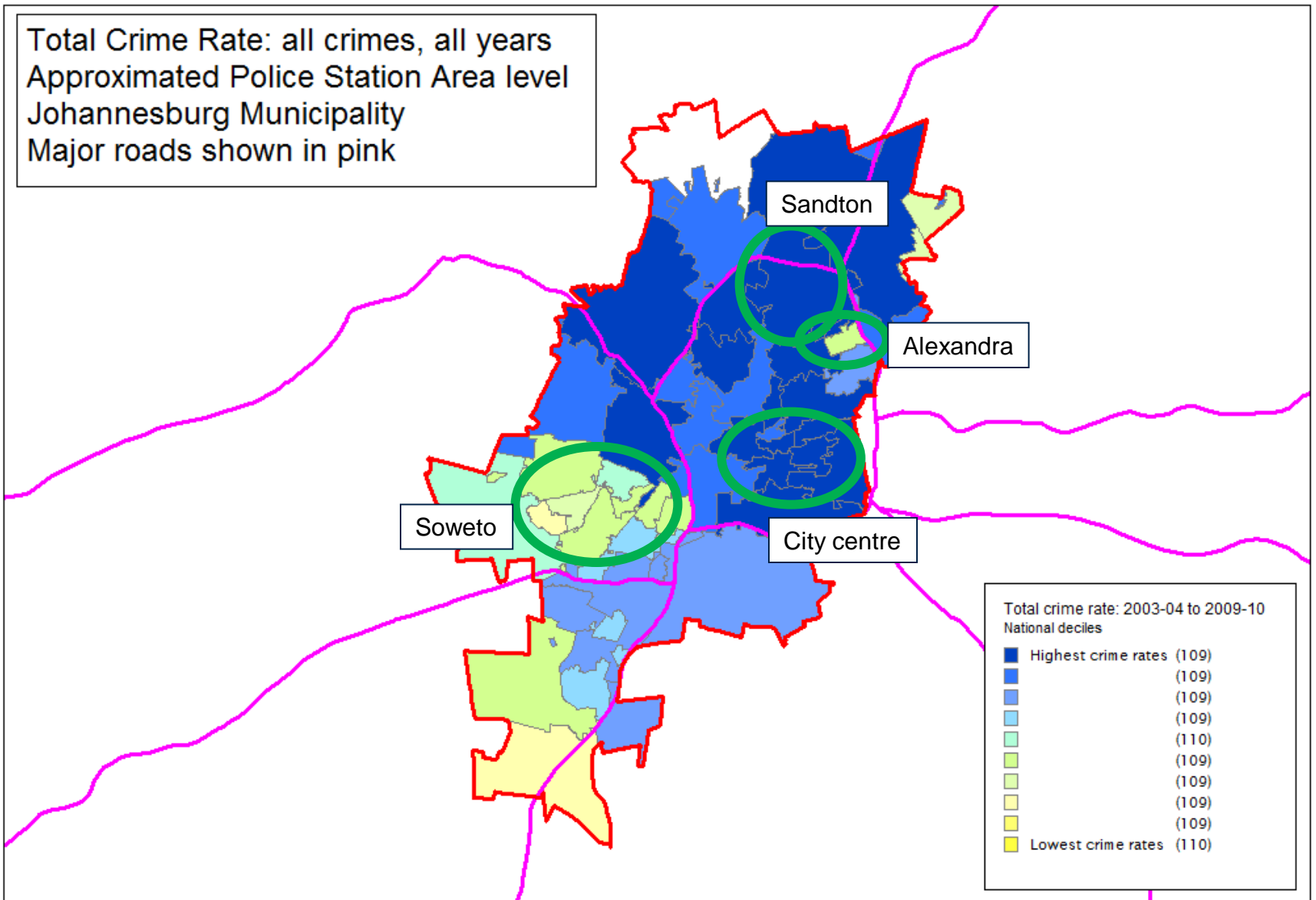


SAIMD 2001

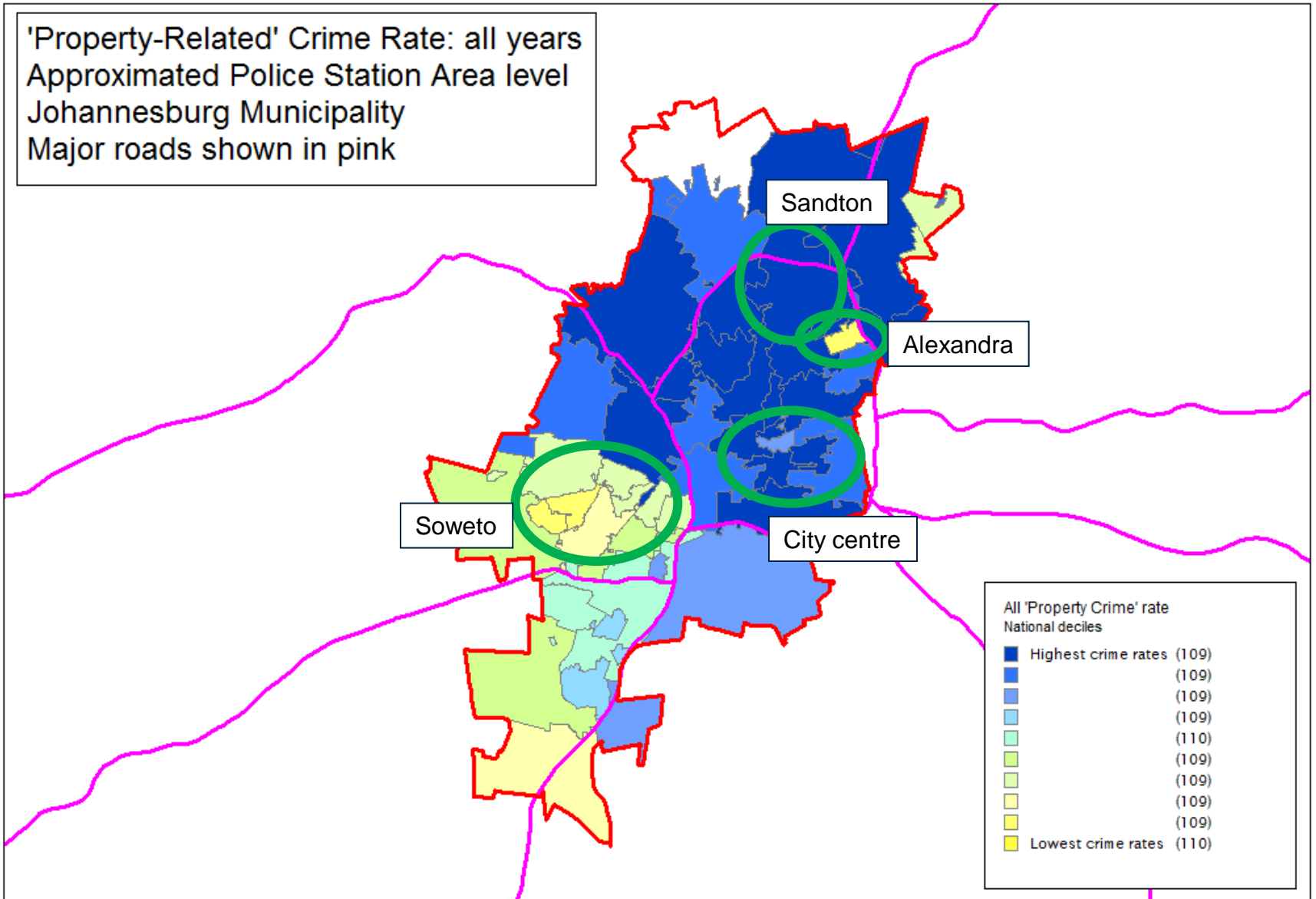
Approximated Police Station Area level
Johannesburg and surrounding areas



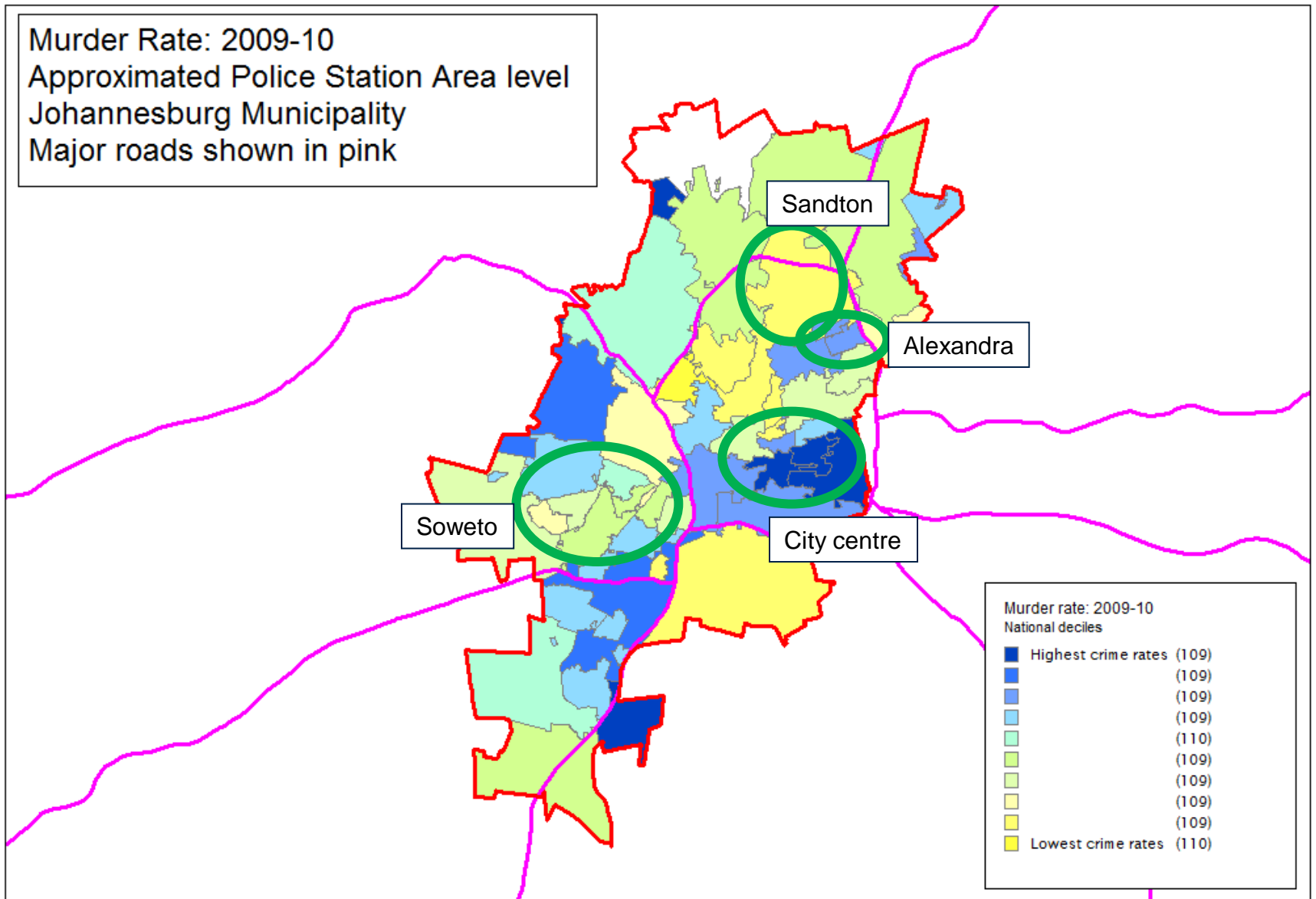
Total Crime Rate: all crimes, all years
Approximated Police Station Area level
Johannesburg Municipality
Major roads shown in pink



'Property-Related' Crime Rate: all years
Approximated Police Station Area level
Johannesburg Municipality
Major roads shown in pink



Murder Rate: 2009-10
Approximated Police Station Area level
Johannesburg Municipality
Major roads shown in pink





SA: moving forwards

- Collaborative project ongoing at the moment between HSRC and Oxford University (with contributions from SASPRI and ISS) on links between crime, poverty and inequality in SA.
- Attempts to obtain detailed SAPS data.
- Analysis of under-reporting using VOCS.
- Statistical analyses of crime-poverty-inequality at police station/precinct level.