



Namibia Index of Multiple Deprivation (NIMD)

By

JM Ashipala
National Planning Commission

Ojijo Odhiambo
UNDP





Content



- ▶ Introduction
- ▶ Deprivations patterns and Trends
- ▶ Conclusions
- ▶ Recommendations



Introduction



- ▶ V2030 Target: GDP growth rate of 6%, low unemployment rate of 2.3%, Gini coefficient of 0.3.
 - ▶ 15 years to 2030
- ▶ NDP4 target: GDP growth of 6%, create 90 615 jobs, reduce extreme poverty to below 10%, reduce gini coefficient by 3% per year.
- ▶ Education & health the enablers
 - ▶ 2 years to NDP4, 2016
- ▶ First NIMD created in 2010 for Khomas Region using data from the 2001 NPHC
 - ▶ Resource allocation within the region
- ▶ Five dimensions of deprivation: material deprivation, employment deprivation, health deprivation, education deprivation and living environment deprivation.
- ▶ NIMD produced at regional, constituency and datazone levels using the 2001 and 2011 NPHC.

Regional Scores and Changes over the 2001-2011 period

REGION	Material		Employment		Education		Environment		Change (2001- 2011)			
	2011	2001	2011	2001	2011	2001	2011	2001	Materials	Employment	Education	environment
Caprivi	53.3	73.5	38.3	17.5	64.1	63.2	89.2	90.2	-20.2	20.8	0.9	-0.9
Erongo	33.0	27.4	30.3	34.2	59.3	63.0	53.0	56.2	5.6	-3.8	-3.7	-3.2
Hardap	34.1	42.9	35.6	33.9	70.8	69.4	62.9	65.5	-8.8	1.7	1.4	-2.6
Karas	33.0	37.2	33.2	28.6	66.5	67.8	59.5	65.3	-4.2	4.6	-1.3	-5.8
Kavango	64.4	75.1	50.8	20.4	73.3	72.4	90.4	95.5	-10.7	30.4	0.9	-5.1
Khomas	30.5	38.0	30.4	29.4	48.8	51.4	52.7	52.1	-7.5	1.0	-2.7	0.7
Kunene	63.4	79.4	36.2	23.5	81.6	75.2	84.4	87.8	-16.0	12.7	6.3	-3.4
Ohangwena	54.3	86.0	43.7	37.3	69.9	65.4	94.2	97.2	-31.8	6.5	4.5	-3.0
Omaheke	49.2	62.8	39.8	24.0	78.4	71.6	83.0	86.3	-13.6	15.7	6.8	-3.2
Omusati	58.5	83.2	42.7	36.5	63.0	63.1	92.0	95.1	-24.6	6.2	-0.1	-3.1
Oshana	53.3	57.5	38.7	40.8	54.6	58.4	73.0	81.4	-4.2	-2.2	-3.8	-8.4
Oshikoto	52.9	83.4	40.6	45.2	67.6	65.8	85.8	88.8	-30.5	-4.7	1.8	-2.9
Otjozondjupa	41.7	57.0	38.3	31.7	73.0	68.2	69.2	74.2	-15.3	6.5	4.8	-5.0
Namibia	48.1	64.7	37.5	31.4	63.5	63.5	76.4	81.1	<i>-16.6</i>	<i>6.1</i>	<i>-0.1</i>	<i>-4.7</i>

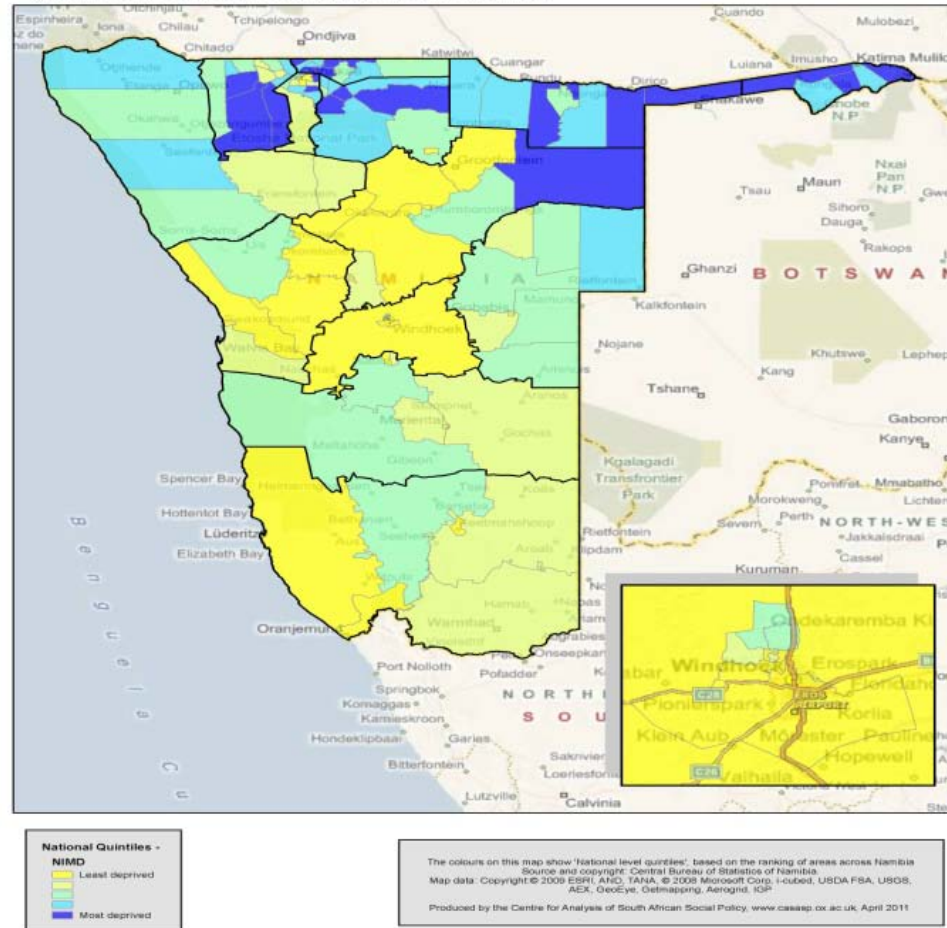
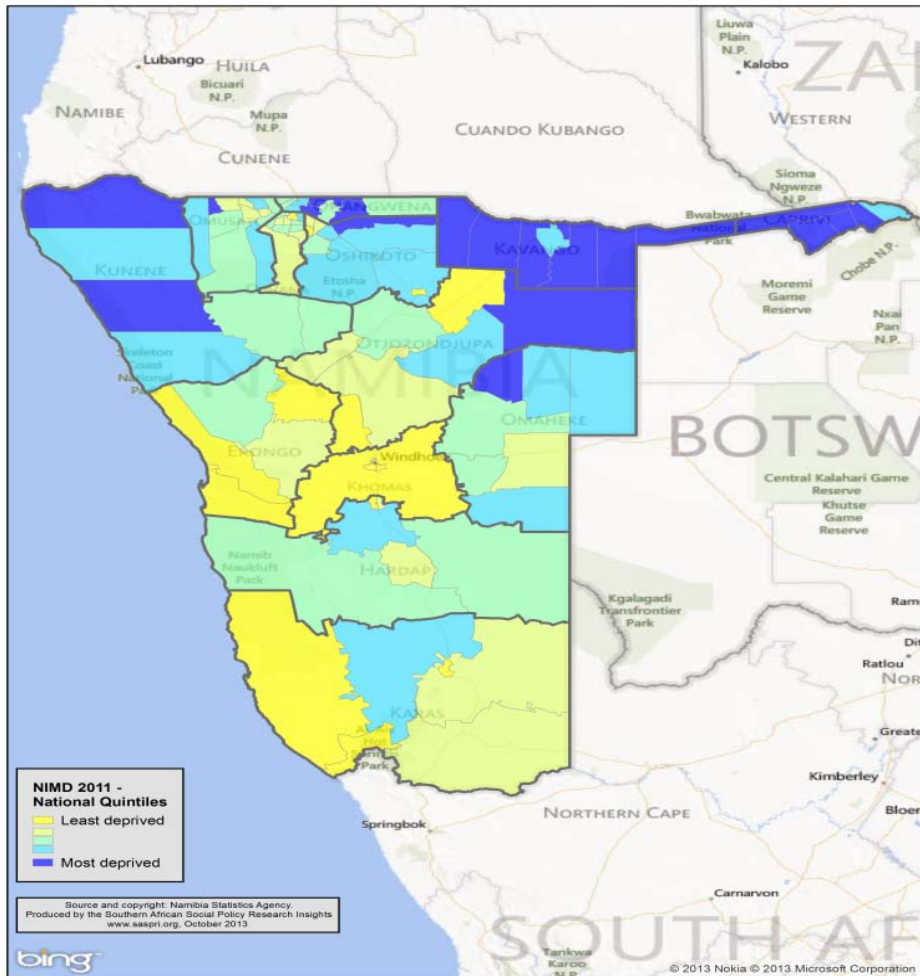


NIMD constituency 2001 - 2011



Map 1: Namibia Index of Multiple Deprivation 2011 at Constituency Level

Map 1: The Namibian Index of Multiple Deprivation 2001



20 Most Deprived Constituencies overall NIMD in 2011

>50% (55%) of 20 most deprived constituencies new entrants

Constituency	Region	Rank 2011	Rank 2001
Kapako	Kavango	1	24
Tsumkwe	Otjozondjupa	2	26
Mashare	Kavango	3	27
Kongola	Caprivi	4	2
Kahenge	Kavango	5	23
Ndiyona	Kavango	6	1
Omundaungilo	Ohangwena	7	14
Onesi	Omusati	8	36
Linyanti	Caprivi	9	25
Mukwe	Kavango	10	18
Rundu Rural East	Kavango	11	22
Sesfontein	Kunene	12	29
Epupa	Kunene	13	13
Sibinda	Caprivi	14	10
Epembe	Ohangwena	15	11
Mpungu	Kavango	16	38
Otjinene	Omaheke	17	87
Omulonga	Ohangwena	18	4
Katima Mulilo Rural	Caprivi	19	34
Ondobe	Ohangwena	20	16

Newly proclaimed town



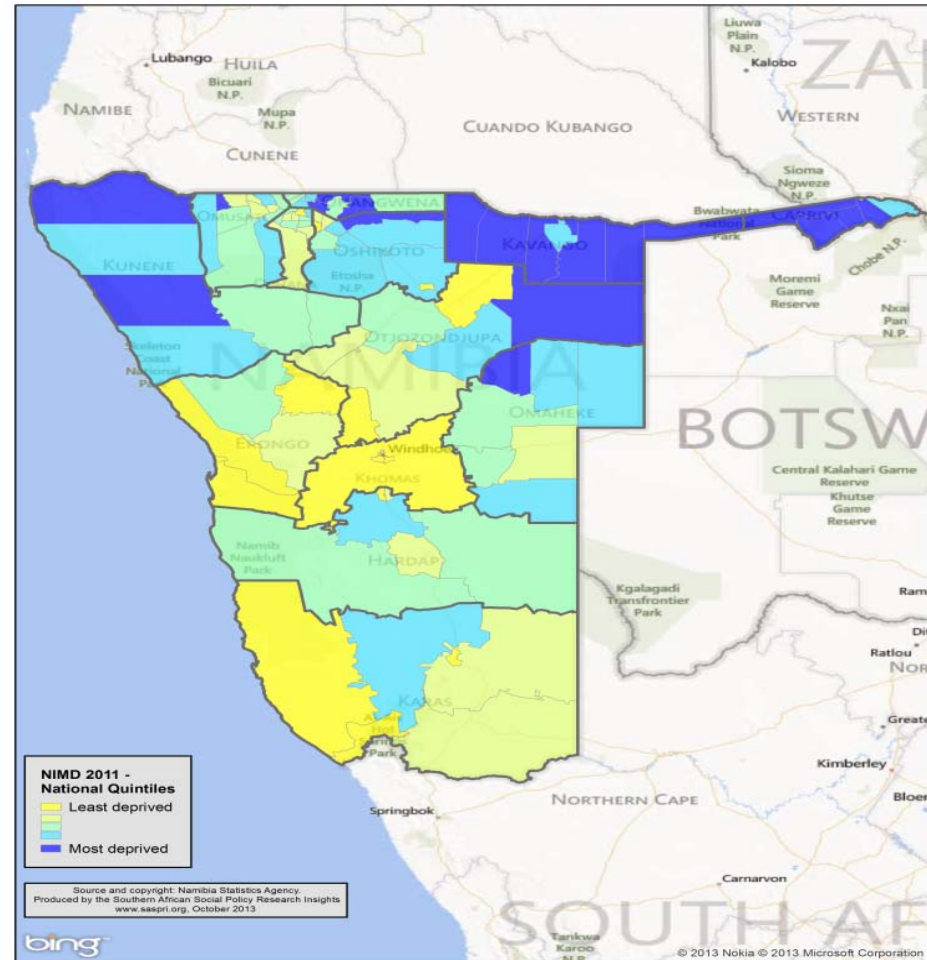
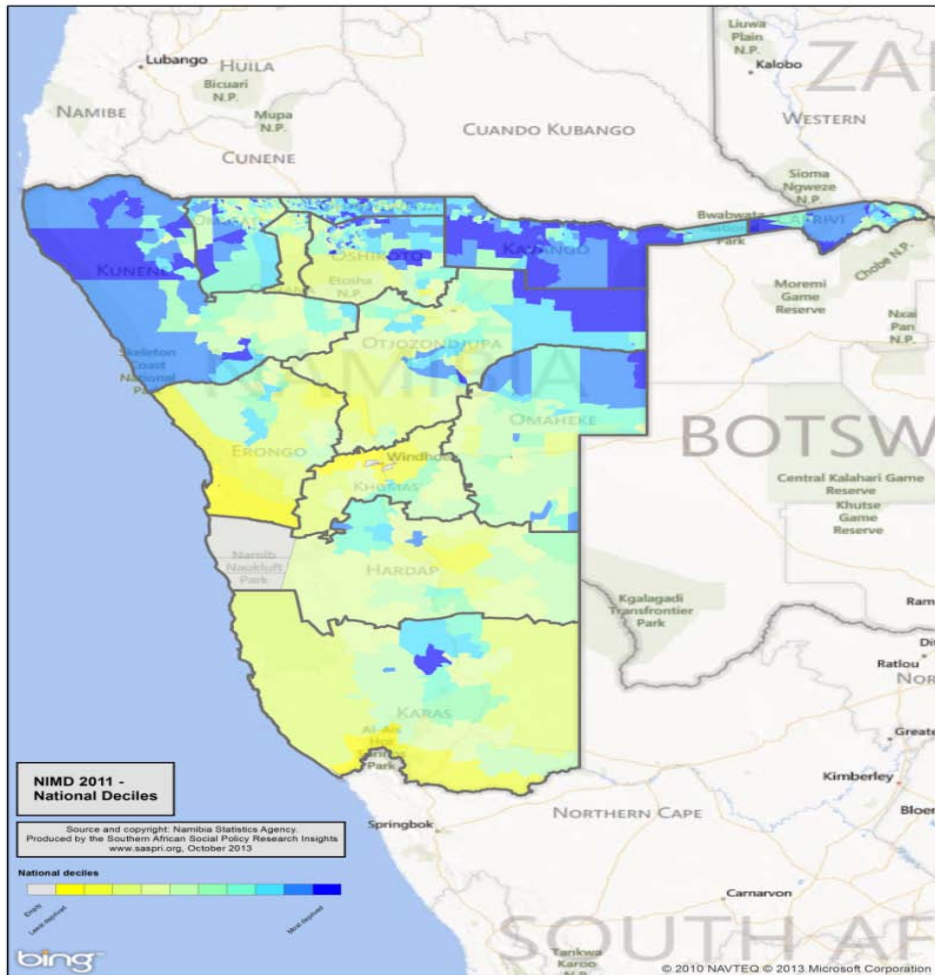
NIMD Datazone 2001 - 2011



Are there are pockets of multiple deprivation within constituencies

Map 7: Namibia Index of Multiple Deprivation 2011 at Datazone Level

Map 1: Namibia Index of Multiple Deprivation 2011 at Constituency Level



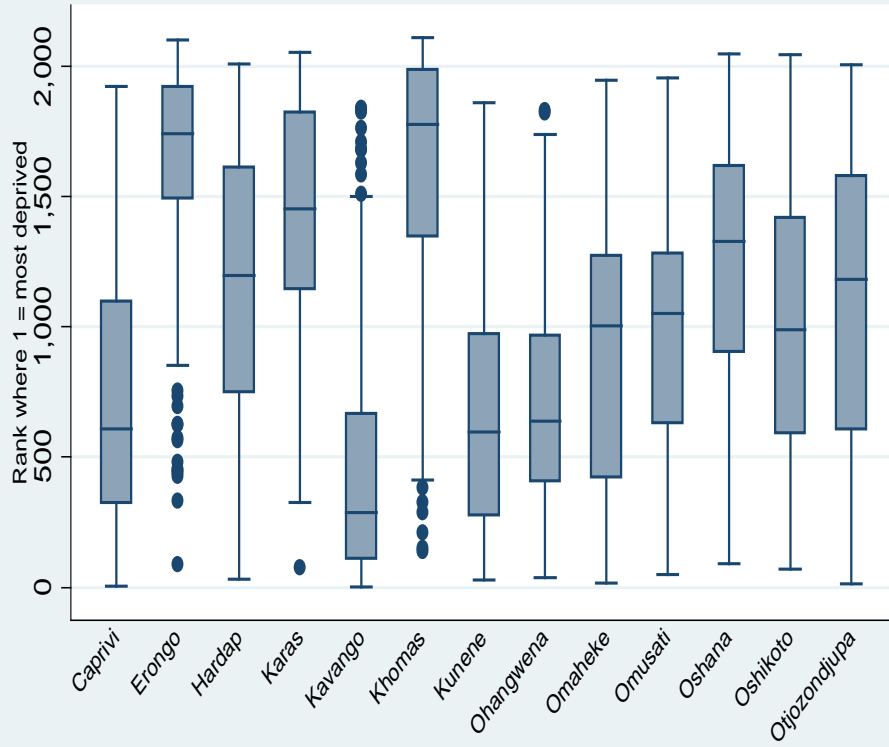


Interquartile NIMD 2001 - 2011



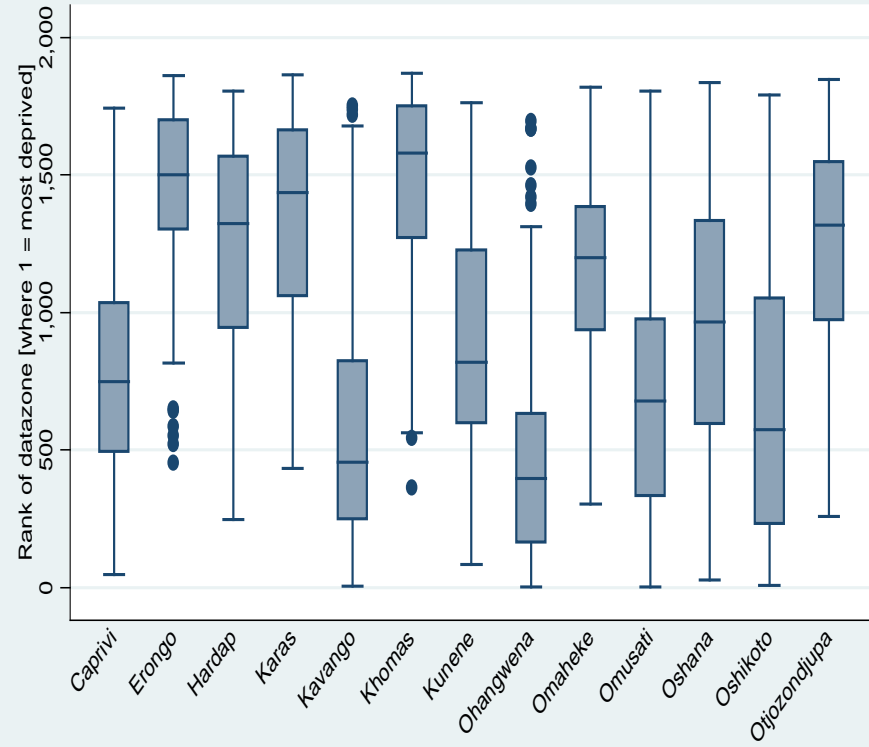
Interquartile Range of Datazone Level NIMD2011

By Region



Interquartile Range of Datazone Level NIMD2001

By Region

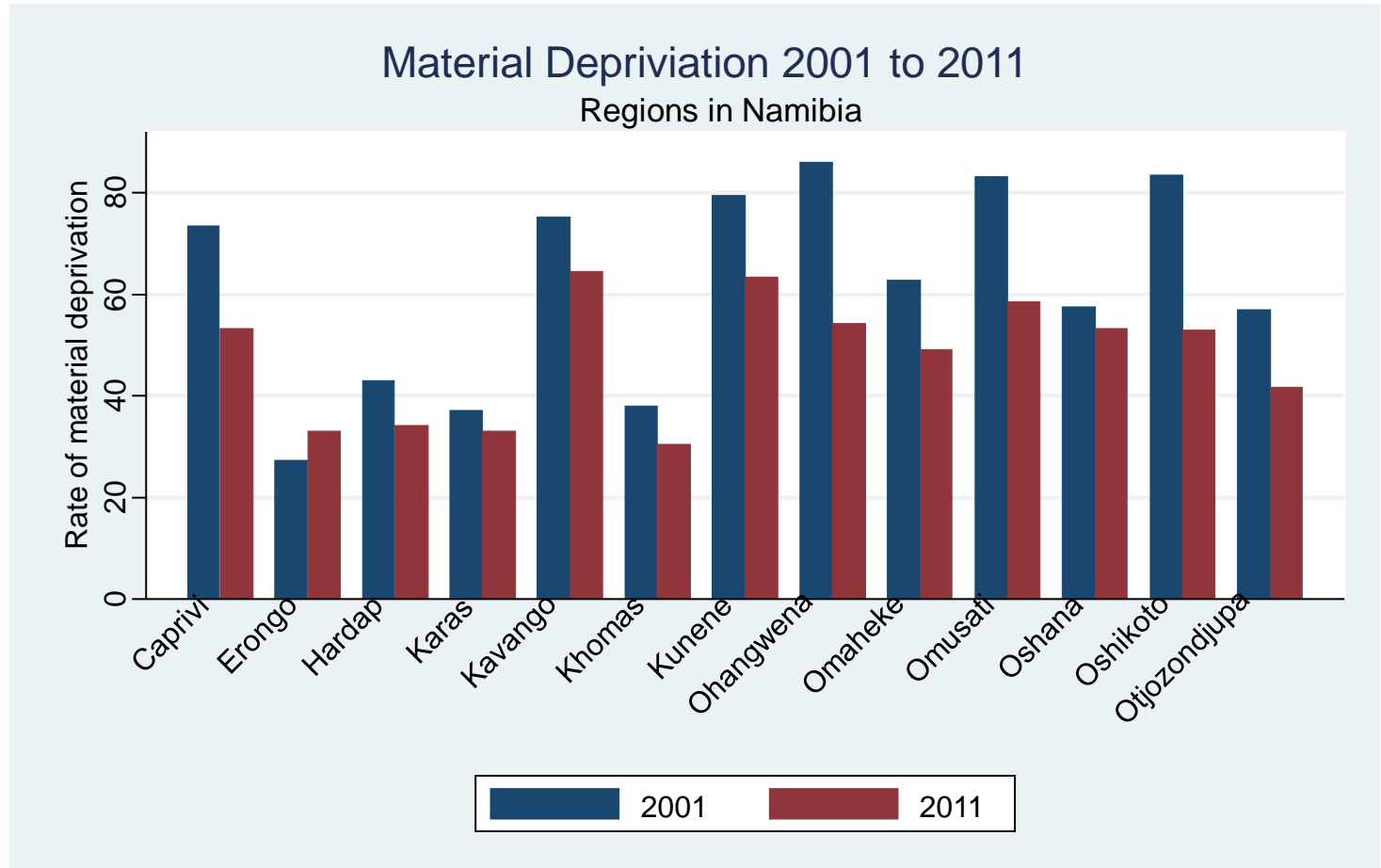




Changes in Material Deprivation over 2001 – 2011 period by Region



- *Erongo an economic hub*
- *LFPR of 80%*
- *Unemployment 30%*



20 most material deprivation constituencies

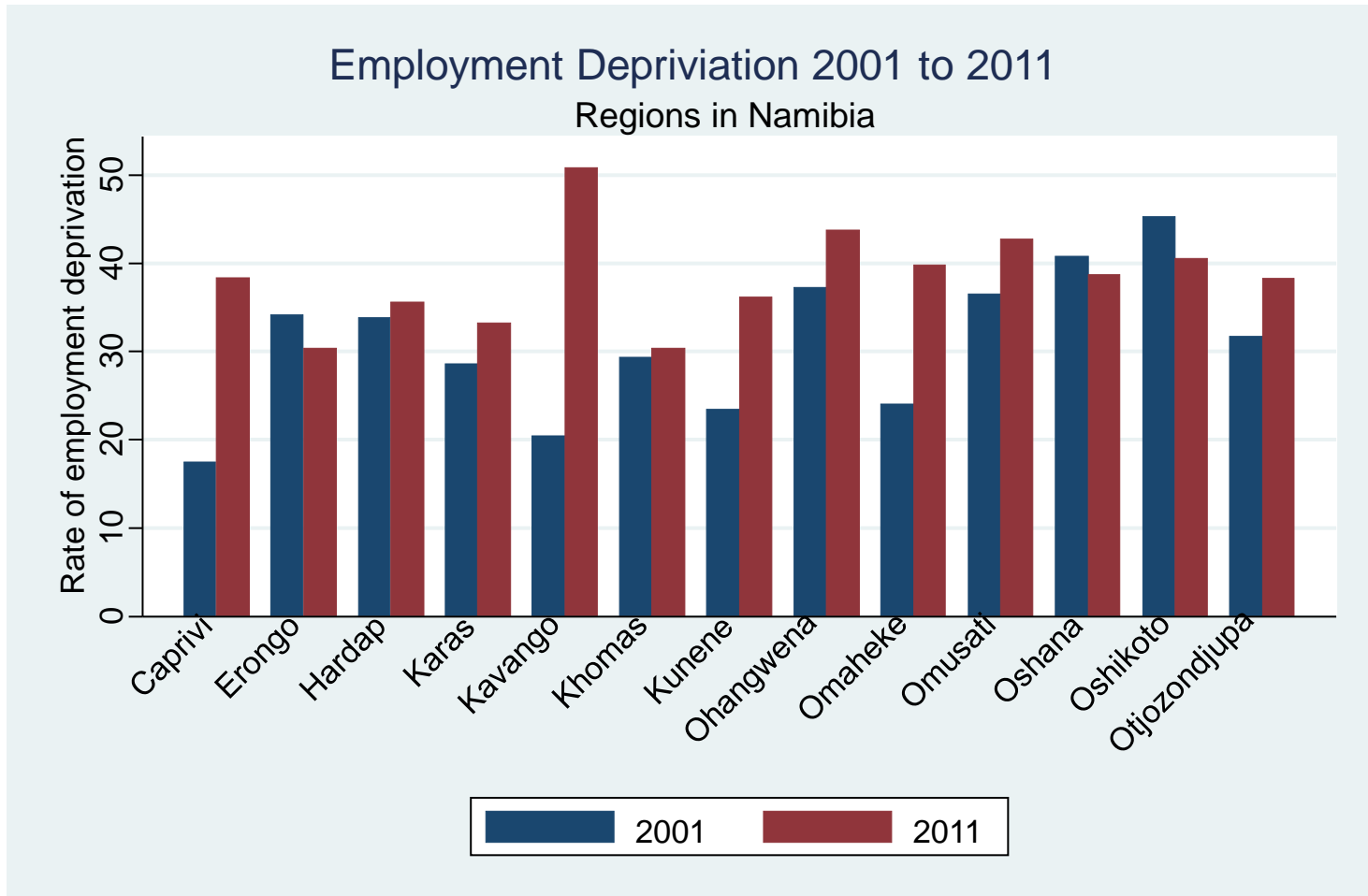
Constituency	Region	Rank	2001	Rank	2011	2001-2011
Epupa	Kunene	<i>15</i>	<i>91.3</i>	<i>1</i>	<i>89.4</i>	<i>-1.9</i>
Tsumkwe	Otjozondjupa	8	95.3	2	81.2	-14.2
Onesi	Omusati	28	86.4	3	76.5	-9.9
Kongola	Caprivi	10	93.4	4	76.3	-17.1
Kahenge	Kavango	52	72.3	5	73.3	1.0
Sesfontein	Kunene	6	96.7	6	73.2	-23.5
Mpungu	Kavango	55	69.9	7	73.0	<i>3.0</i>
Omundaungilo	Ohangwena	2	98.6	8	72.8	-25.8
Kapako	Kavango	<i>59</i>	<i>64.8</i>	<i>9</i>	<i>72.8</i>	<i>8.0</i>
Eengondi	Oshikoto	5	98.3	10	71.9	-26.4
Epembe	Ohangwena	<i>1</i>	<i>98.9</i>	<i>11</i>	<i>70.8</i>	<i>-28.1</i>
Mashare	Kavango	12	93.0	12	70.7	-22.3
Okankolo	Oshikoto	3	98.3	13	70.5	-27.9
Uukwiyu	Oshana	64	62.0	14	70.4	<i>8.4</i>
Mukwe	Kavango	27	86.4	15	69.8	-16.6
Sibinda	Caprivi	11	93.3	16	69.5	-23.7
Otjombinde	Omaheke	40	79.6	17	68.9	-10.6
Linyanti	Caprivi	16	90.8	18	68.2	-22.6
Opuwo	Kunene	20	89.7	19	65.8	-23.9
Okaku	Oshana	49	74.7	20	65.5	-9.2



Changes in Employment Deprivation over 2001 – 2011 period by region



Erongo, An increase in material but a decline in employment



*20 most
employment
deprived
constituencies*

Constituency	Region	Rank	2001	Rank	2011	Change
Rundu Rural East	Kavango	45	33.2	1	70.8	<i>37.6</i>
Onesi	Omusati	47	32.5	2	59.5	27.1
Kapako	Kavango	<i>95</i>	<i>13.5</i>	<i>3</i>	<i>58.0</i>	<i>44.5</i>
Rundu Rural West	Kavango	78	23.5	4	57.3	<i>33.7</i>
Mashare	Kavango	80	23.1	5	55.5	32.4
Omuthiyagwiipundi	Oshikoto	19	43.1	6	54.7	11.6
Rundu Urban	Kavango	63	28.3	7	52.8	24.5
Tsumkwe	Otjozondjupa	84	21.3	8	50.7	29.5
Katima Mulilo Urban	Caprivi	57	30.1	9	50.1	20.0
Otamanzi	Omusati	11	<i>60.5</i>	<i>10</i>	<i>49.6</i>	<i>-10.9</i>
Otjinene	Omaheke	90	17.7	11	49.2	31.6
Oshikango	Ohangwena	18	43.9	12	48.9	5.0
Ohangwena	Ohangwena	28	38.9	13	47.7	8.8
Khorixas	Kunene	17	44.2	14	47.5	3.3
Okalongo	Omusati	91	16.0	15	47.5	31.5
Okatana	Oshana	54	31.0	16	47.4	16.4
Ondobe	Ohangwena	26	39.5	17	47.3	7.9
Sesfontein	Kunene	67	27.3	18	47.0	19.8
Aminuis	Omaheke	70	26.1	19	47.0	20.9
Okakarara	Otjozondjupa	15	48.5	20	47.0	<i>-1.5</i>

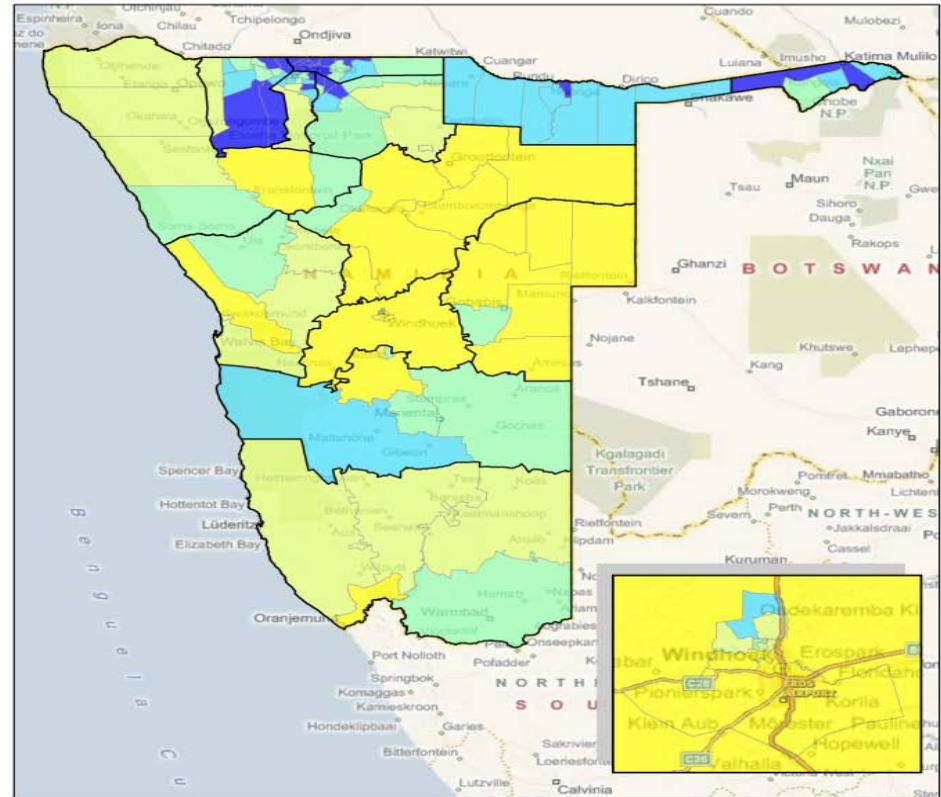
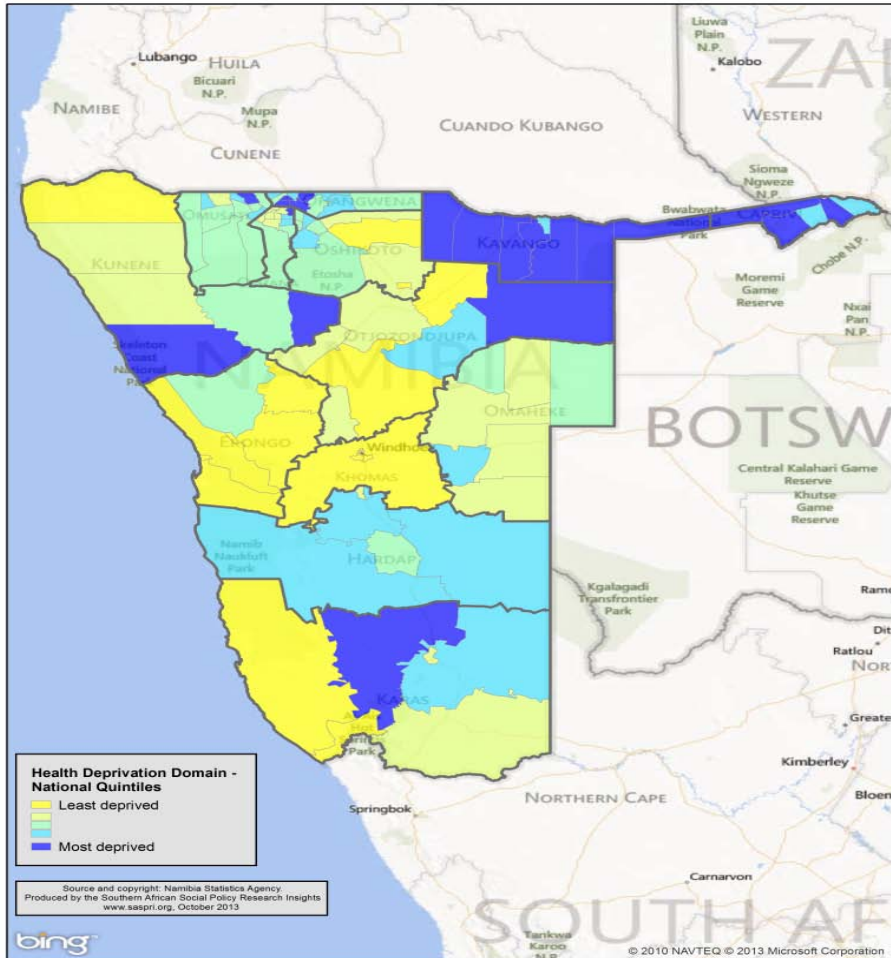


Constituency Level Health Deprivation in 2011 and 2001



Map 4: Health Deprivation Domain of the NIMD 2011 at Constituency Level

Map 4: The Namibian Index of Multiple Deprivation 2001 - Health Deprivation Domain



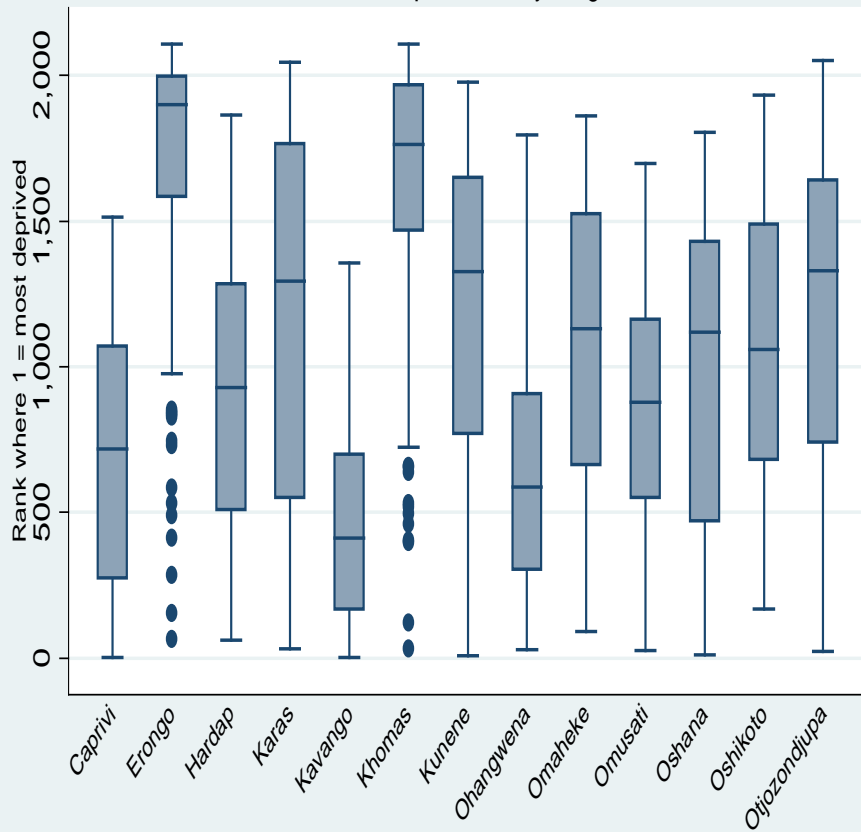
The colours on the map show 'National level quintiles', based on the ranking of areas across Namibia. Source and copyright: Central Bureau of Statistics of Namibia. Map data: Copyright © 2009 ESRI, AND: TANA, © 2008 Microsoft Corp., i-cubed, USDA/FSA, USGS, AEX, GeoEye, Geotmapping, AeroGRID, ISP. Produced by the Centre for Analysis of South African Social Policy, www.casap.org.za, April 2011

**20 Most Health
Deprived
Constituencies**

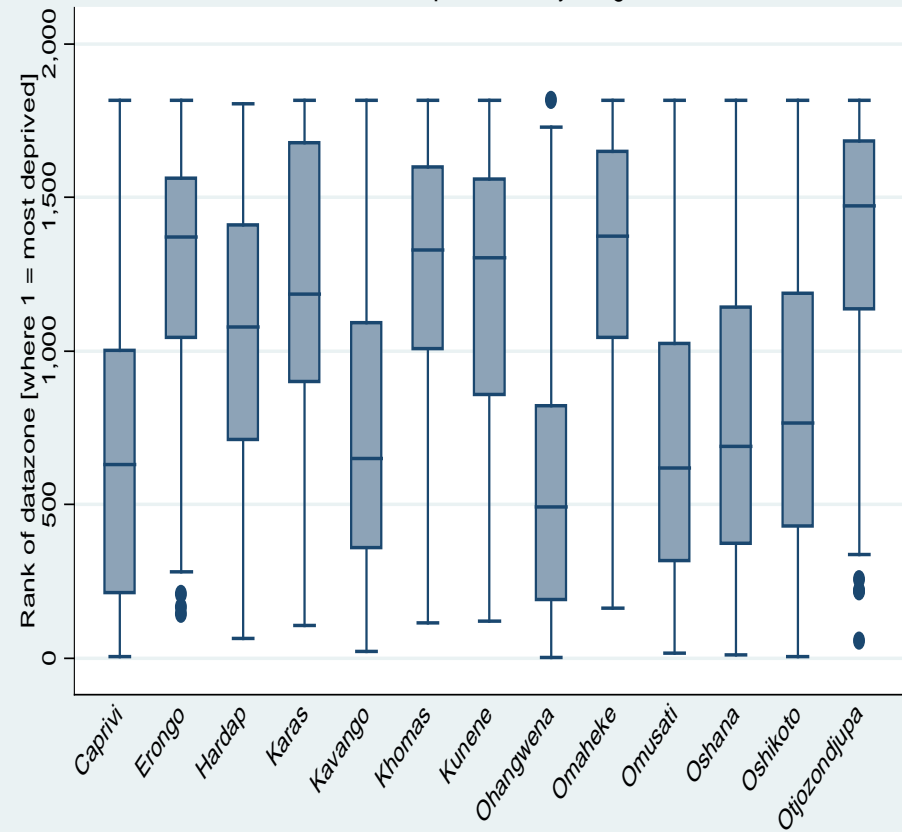
Constituency	Region	Rank	2001	Rank	2011	Change
Khorixas	Kunene	61	404.9	1	793.1	388.2
Linyanti	Caprivi	49	551.7	2	778.8	227.1
Mukwe	Kavango	42	607.4	3	758.3	151.0
Ohangwena	Ohangwena	7	949.2	4	600.1	-349.0
Ndiyona	Kavango	29	691.8	5	597.3	-94.5
Rundu Urban	Kavango	36	653.6	6	596.8	-56.7
Katima Mulilo Rural	Caprivi	6	982.7	7	592.9	-389.8
Kongola	Caprivi	1	1374.9	8	584.8	-790.1
Kapako	Kavango	22	776.4	9	576.2	-200.2
Okaku	Oshana	3	1006.7	10	574.9	-431.8
Mashare	Kavango	37	634.8	11	568.2	-66.5
Kahenge	Kavango	25	736.7	12	566.4	-170.3
Endola	Ohangwena	10	910.8	13	563.1	-347.7
Mpungu	Kavango	35	654.1	14	555.6	-98.5
Omulonga	Ohangwena	8	922.3	15	540.3	-382.0
Berseba	Karas	80	322.3	16	533.4	211.1
Tsumkwe	Otjozondjupa	91	259.4	17	521.8	262.3
Rundu Rural West	Kavango	38	634.4	18	520.1	-114.2
Outjo	Kunene	51	519.8	19	519.5	-0.3
Ondobe	Ohangwena	2	1070.8	20	515.6	-555.2

Inter-quartile Range Health Deprivation by Regions in 2001 and 2011

Interquartile Range of Datazone Level NIMD2011
Health Deprivation By Region



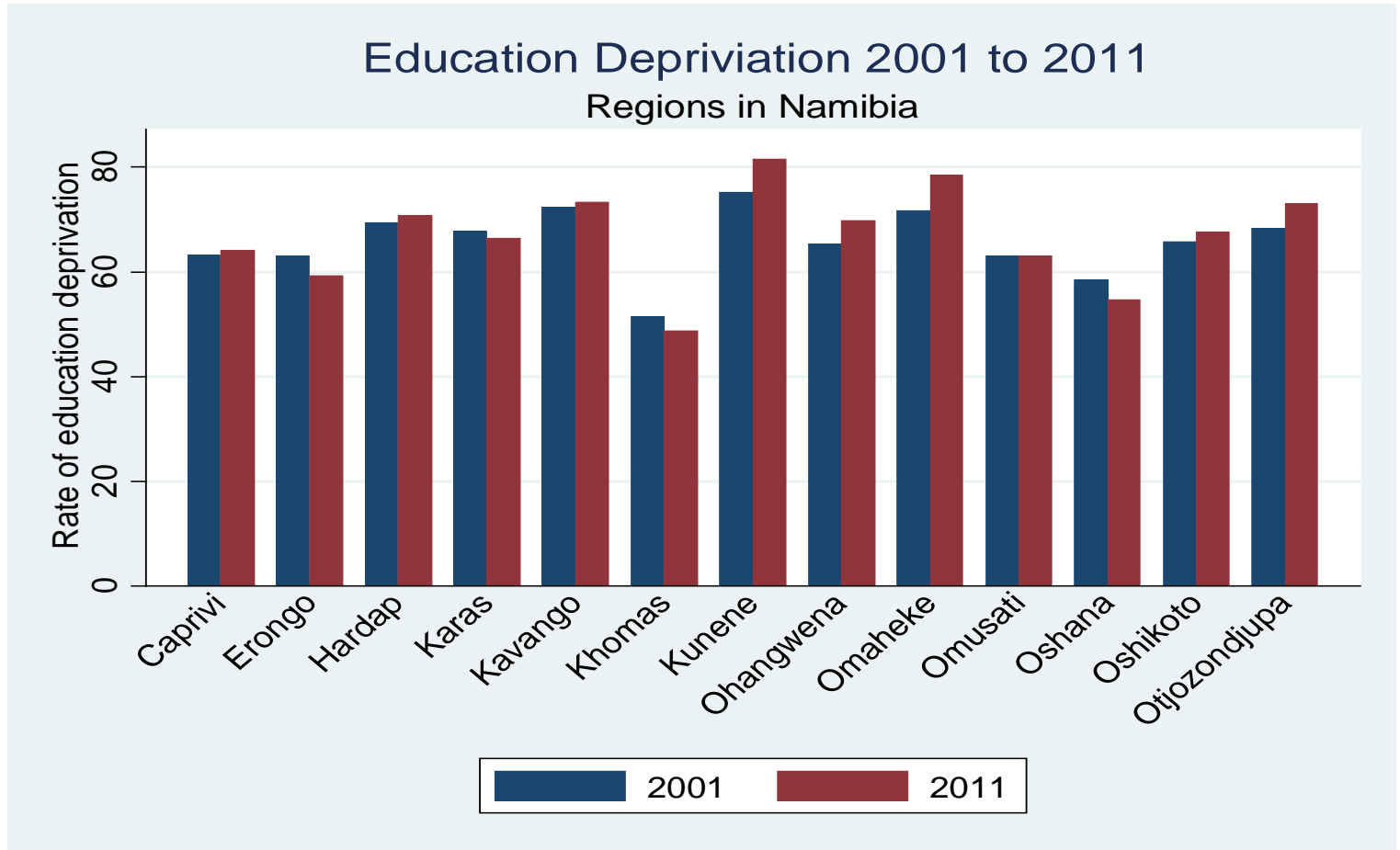
Interquartile Range of Datazone Level NIMD2001
Health Deprivation By Region





Education Deprivation Domain

Erongo
Oshana
Khomas
Karas



20 Most Education Deprived Constituencies

Constituency	Region	Rank	2001	Rank	2011	Change
Epupa	Kunene	1	83.4	1	91.1	7.7
Tsumkwe	Otjozondjupa	4	78.9	2	85.8	6.9
Rehoboth Rural	Hardap	6	77.1	3	85.2	8.1
Steinhausen	Omaheke	3	79.3	4	84.1	4.8
Guinas	Oshikoto	2	80.0	5	83.9	3.9
Sesfontein	Kunene	11	76.1	6	83.5	7.4
Kamanjab	Kunene	20	74.8	7	82.3	7.6
Otavi	Otjozondjupa	13	75.8	8	82.1	6.2
Omatako	Otjozondjupa	27	72.2	9	81.5	9.3
Daures	Erongo	25	72.8	10	81.1	8.3
Otjinene	Omaheke	66	64.6	11	81.0	16.4
Otjombinde	Omaheke	22	73.9	12	80.9	7.0
Opuwo	Kunene	24	73.3	13	80.6	7.2
Eengondi	Oshikoto	10	76.3	14	80.2	4.0
Kapako	Kavango	12	76.0	15	80.2	4.2
Epukiro	Omaheke	62	65.5	16	79.7	14.2
Kahenge	Kavango	7	76.9	17	79.5	2.5
Kalahari	Omaheke	5	78.2	18	79.2	0.9
Ndiyona	Kavango	14	75.7	19	78.9	3.1
Outjo	Kunene	23	73.8	20	78.6	4.8

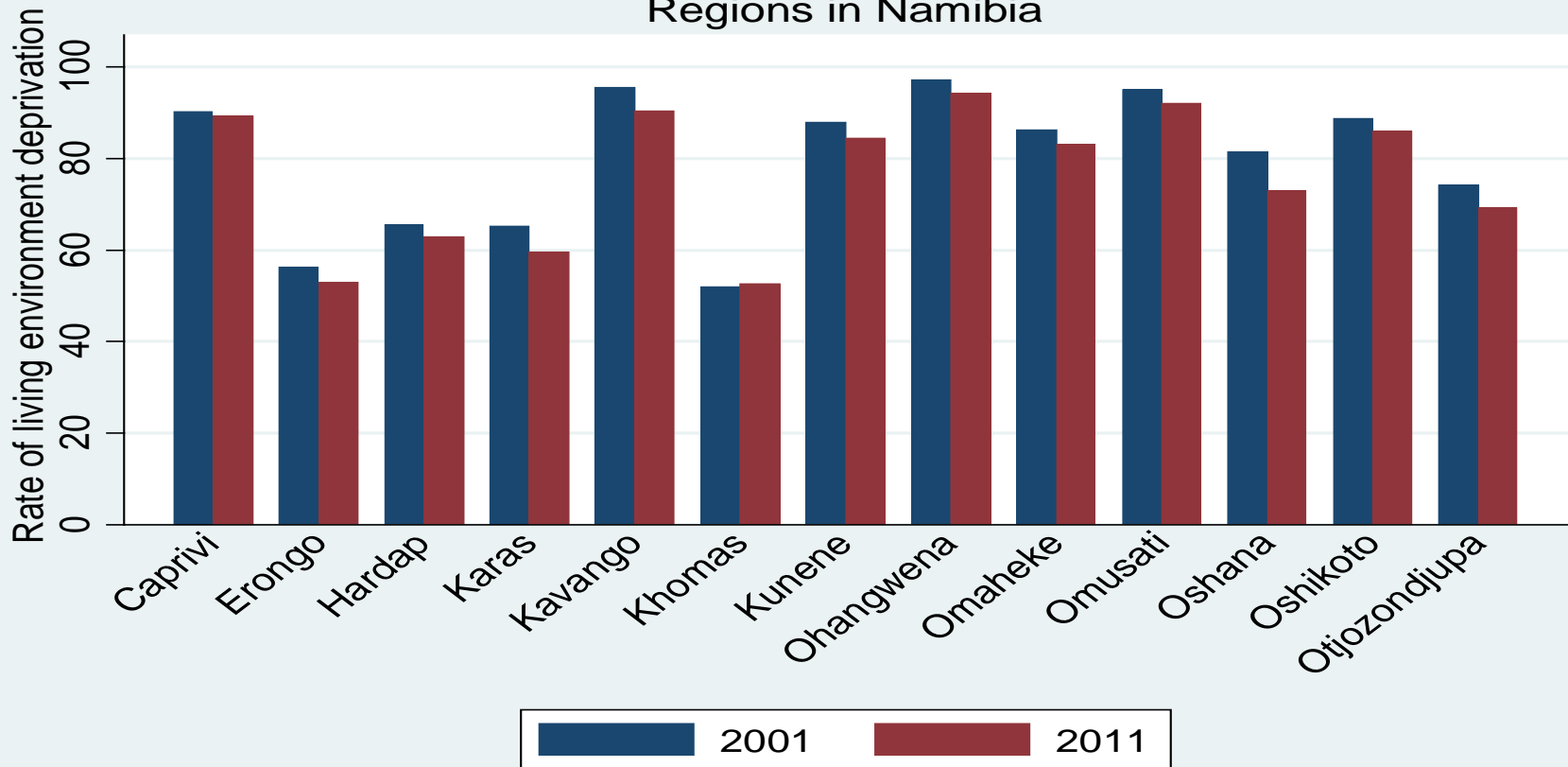
All 20 most education deprived constituencies registered an increase



Changes in Living Environment Deprivation over 2001 – 2011 period by region



living environment Deprivation 2001 to 2011
Regions in Namibia



<i>20 most Environment deprivation constituencies</i>	Constituency	Region	Rank 2001	Rank 2011	Change		
	Epembe	Ohangwena	3	99.8	1	99.8	0.0
	Okankolo	Oshikoto	6	99.6	2	99.0	-0.6
	Kabe	Caprivi	9	99.4	3	98.9	-0.5
	Linyanti	Caprivi	1	99.9	4	98.7	-1.2
	Omundaungilo	Ohangwena	11	99.2	5	98.7	-0.5
	Kapako	Kavango	5	99.6	6	98.6	-1.0
	Epupa	Kunene	4	99.7	7	98.6	-1.1
	Kahenge	Kavango	7	99.4	8	98.4	-1.0
	Kongola	Caprivi	16	98.6	9	98.3	-0.2
	Sibinda	Caprivi	2	99.9	10	98.3	-1.6
	Eengondi	Oshikoto	14	98.8	11	98.1	-0.7
	Katima Mulilo Rural	Caprivi	20	98.2	12	98.0	-0.2
	Omulonga	Ohangwena	15	98.8	13	98.0	-0.8
	Mashare	Kavango	12	99.2	14	97.9	-1.2
	Ondobe	Ohangwena	13	99.0	15	97.9	-1.1
	Mukwe	Kavango	17	98.6	16	97.6	-0.9
	Otamanzi	Omusati	22	97.6	17	97.5	0.0
	Okongo	Ohangwena	8	99.4	18	97.3	-2.1
	Ndiyona	Kavango	10	99.2	19	97.2	-2.0
	Mpungu	Kavango	18	98.5	20	96.3	-2.2



Conclusions...



- ▶ Wide regional disparities with regards to multiple deprivations.
- ▶ 3 (5) most deprived constituencies located in Kavango while 3 (5) least deprived constituencies located in Khomas.
- ▶ Kapako in Kavango, the most deprived constituency followed by Tsumkwe in Otzondjupa region, Mashare in Kavango, Kongola in Zambezi and Kehenge in Kavango.
- ▶ 16.6 percentage points decline on materially deprived, 2001 – 2011.
- ▶ Living environment and education deprived declined by 4.7 and 0.1 percentage points.
- ▶ Employment deprivation increased by 6.1 percentage points at national, but in three of the regions – Erongo, Oshana and Oshikoto, it declined.
- ▶ Half of the regions registered declines in people who are education deprived
- ▶ All regions except Khomas, registered declines in living environment deprivation



Recommendations



- ▶ Prioritize resource allocation according to regional and constituency developmental needs
 - ▶ Ensure efficiency of resources allocated
 - ▶ Improve service delivery by targeting most deprived areas.
-



Thank You

